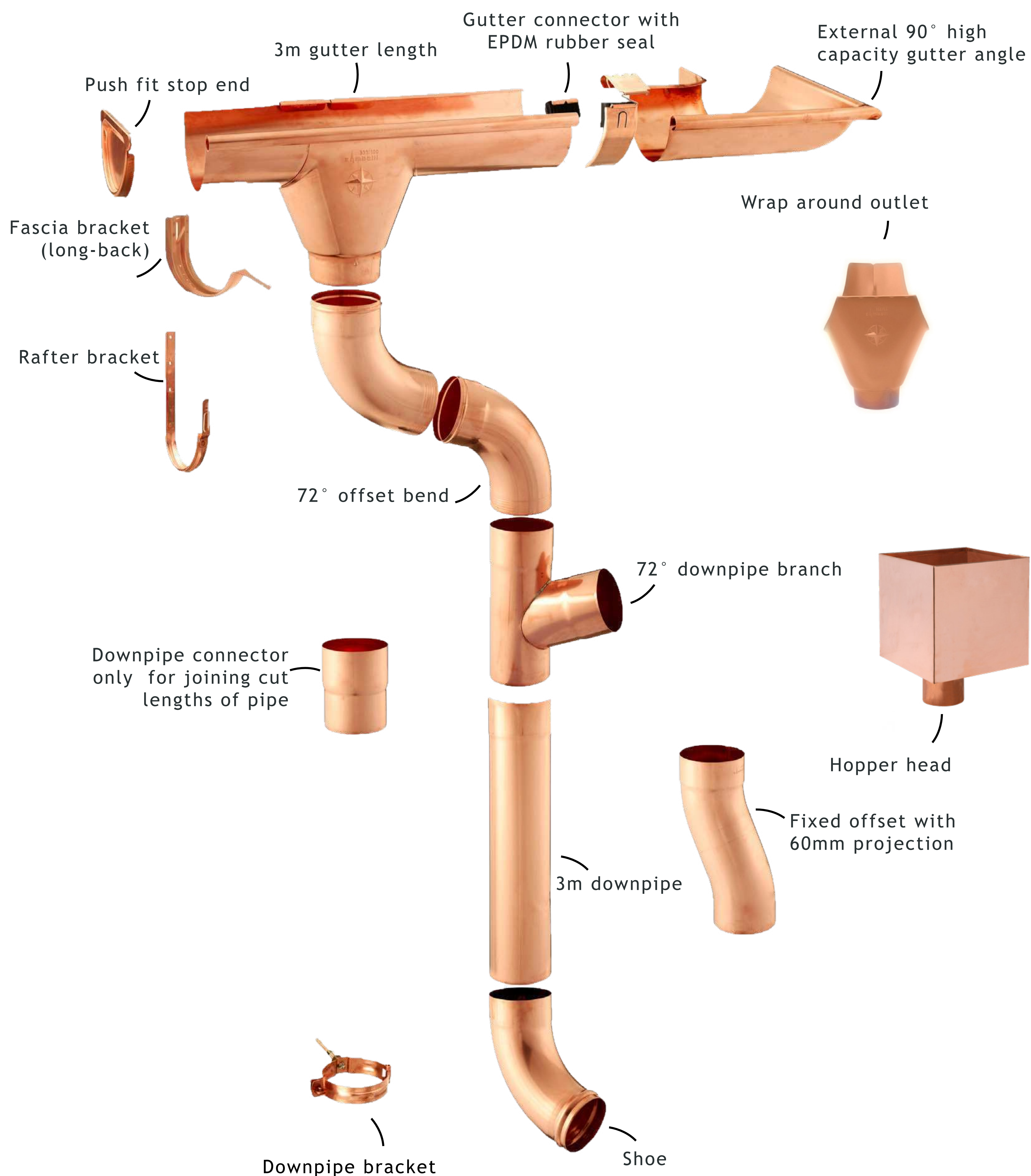


Copper System Components

Rainwater guttering systems consist of a series of components that fit together to suit the required layout. Below is a schematic showing the component options of the copper gutter systems.



Copper Half Round Gutters

Embrace timeless elegance with our copper half-round gutters. Crafted for both durability and beauty, these premium materials redefine your projects aesthetic while offering superior rainwater management. The copper patina visibly changes colour beautifully with age.

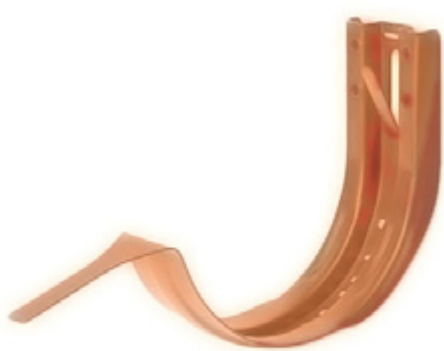
3m Length



	Product Code	Copper	
115mm	HRS40/3M	/COP	
125mm	HRS50/3M	/COP	
150mm	HRS60/3M		

- Copper gutter systems form a thin layer called patina
- The copper patina visibly changes colour beautifully with age
- High UV resistance (RUV-4)
- Roll formed from 0.6mm copper or zinc
- 3m length as standard

Fascia Bracket



	Product Code	Copper	
115mm	HRS40/FB*	/COP	●
125mm	HRS50/FB*	/COP	●
150mm	HRS60/FB*		●

- Manufactured to match the half round profile exactly for secure connection to both gutter and structure
- Generally position at 915mm centres, 3no. per 3m length
- Brackets for the natural zinc finish are manufactured from 1.25mm galvanised steel
- Maximum stability due to deep stamping of the reinforcing seam

Union Clip



	Product Code	Copper	
115mm	HRS40/UC*	/COP	
125mm	HRS50/UC*	/COP	
150mm	HRS60/UC*		

- Inclusive of rubber seal
- Snap fix system via Z spring to ensure secure and robust connection between gutter lengths and fittings
- Demountable and reusable
- Allowance for expansion within the system
- Manufactured to fit the half round system with exact precision

Push Fit Stop End




	Product Code	Copper	
115mm	HRS40/SE*	/COP	
125mm	HRS50/SE*	/COP	
150mm	HRS60/SE*		

- Universal fitting so can be used on either left or right hand of gutter
- Inclusive of rubber seal to allow connection and seal to gutter
- Consistant shape for accurate fitting onto half round profile
- Pressed form allows secure connection to gutter when using the rubber included

Finishes - *to specify a plain galvanised finish order the code as shown in the first column, to specify a premium colour or finish add the correct suffix to the end of the product code, for example HRS40/3MA/COP for a 115mm gutter 3m length in copper finish.

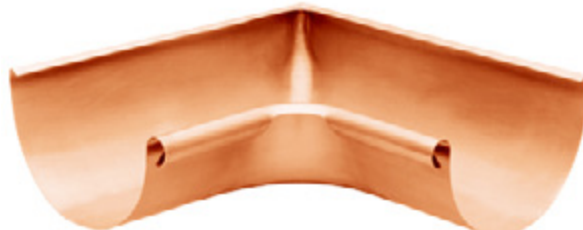
Copper Half Round Gutters

External 90° Angle

	Product Code		Copper	
	115mm	HRS40/EA90	/COP	
	125mm	HRS50/EA90	/COP	
	150mm	HRS60/EA90		


- Patented water bend enables perfect water flow
- Additional stability provided by welding point on the fixed bead
- Designed to connect directly onto length without the need to mitre on site
- Other angles available upon request

Internal 90° Angle

	Product Code		Copper	
	115mm	HRS40/IA90	/COP	
	125mm	HRS50/IA90	/COP	
	150mm	HRS60/IA90		


- Patented water bend enables perfect water flow
- Seamless deep drawn design
- Designed to connect directly onto length without the need to mitre on site
- Other angles available upon request

External 135° Angle

	Product Code		Copper	
	115mm	HRS40/EA135	/COP	
	125mm	HRS50/EA135	/COP	
	150mm	HRS60/EA135		

- Patented water bend enables perfect water flow
- Additional stability provided by welding point on the fixed bead
- Designed to connect directly onto length without the need to mitre on site
- Other angles available upon request

Internal 135° Angle

	Product Code		Copper	
	115mm	HRS40/IA135A*	/COP	
	125mm	HRS50/IA135A*	/COP	
	150mm	HRS60/IA135A*		

- Patented water bend enables perfect water flow
- Seamless deep drawn design
- Designed to connect directly onto length without the need to mitre on site
- Other angles available upon request

Finishes - *to specify a plain galvanised finish order the code as shown in the first column, to specify a premium colour or finish add the correct suffix to the end of the product code, for example HRS40/3MA/COP for a 115mm gutter 3m length in copper finish.

Copper Half Round Gutters

Wrap Around Outlet 80mm Pipe



	Product Code	Copper	
115mm	HRS40/RO80*	/COP	
125mm	HRS50/RO80*	/COP	

- Patented reinforced bend for maximum stability
- Chamfered for accuracy and speed during installation
- Three point connection around profile to ensure secure fit
- Requires cutting on site, refer to installation instructions
- Provides flexibility during installation as this unit can be installed anywhere along the length

Wrap Around Outlet 100mm Pipe



	Product Code	Copper	
150mm	HRS60/RO100*		

- Patented reinforced bend for maximum stability
- Chamfered for accuracy and speed during installation
- Three point connection around profile to ensure secure fit
- Requires cutting on site, refer to installation instructions
- Provides flexibility during installation as this unit can be installed anywhere along the length

Pre Fabricated Outlet 80mm Pipe



	Product Code	Copper	
115mm	HRS40/ROA80A*	/COP	
125mm	HRS50/ROA80A*	/COP	

- Pre-fabricated outlet within a 300mm length of gutter
- Can be connected easily on site via union clips to speed installation and avoid having to cut the outlet for the wrap around version
- Tapered outlet to allow higher flow rate and transition from horizontal to vertical drainage

Pre Fabricated Outlet 100mm Pipe



	Product Code	Copper	Natural Zinc
150mm	HRS60/ROA100A*		/NTZ

- Pre-fabricated outlet within a 300mm length of gutter
- Can be connected easily on site via union clips to speed installation and avoid having to cut the outlet for the wrap around version
- Inclusive of bead connector and union clips
- Tapered outlet to allow higher flow rate and transition from horizontal to vertical drainage

Bead Connector



	Product Code	Copper	
115mm	HRS40/BC	●	●
125mm	HRS50/BC	●	●
150mm	HRS60/BC		●

- If replacements or spares are required the codes below can be ordered
- Must be installed wherever a connection is made
- Designed to fit within the rolled front edge of the half round profile in order to secure the front edge of two parts being
- Please ensure a 5mm expansion gap is provided for movement

Finishes - *to specify a plain galvanised finish order the code as shown in the first column, to specify a premium colour or finish add the correct suffix to the end of the product code, for example HRS40/3MA/COP for a 115mm gutter 3m length in copper finish.

Copper Half Round Gutters

Side Fix Rafter Bracket



Product Code		Copper	
115mm	HRS40/SF*		●
125mm	HRS50/SF*	/COP	●
150mm	HRS50/SF*		●

Please note: There is no natural zinc version of rafter brackets, therefore galvanised rafter brackets are used

- For use in applications where no fascia is present and the rafters are exposed
- Half round profile to secure the gutter in place once installed
- Side fix rafter brackets are designed to fix into the side of an exposed rafter
- Can be installed after the roof covering has been installed

Top Fix Rafter Bracket



Product Code		Copper	
115mm	HRS40/TF*	/COP	●
125mm	HRS50/TF*	/COP	●
150mm	HRS50/TF*		●

Please note: There is no natural zinc version of rafter brackets, therefore galvanised rafter brackets are used

- Top fix rafter bracket fixed to the top of exposed rafter
- Half round profile to secure the gutter in place once installed
- Side fix rafter brackets are designed to fix into the side of an exposed rafter
- Must be installed before the roof covering has been installed
- Rafter brackets can be bent on site to suit, additonal bending tool available to purchase.

Top-Fix Rafter Bracket Bending Tool



Product Code	
	HRS/RAFTBEND

- Top-fix rafter gutter-bracket bending tool
- For use on steel top fix brackets that need to be ‘Bent On Site’

Fascia Bracket Angle Adjuster



Product Code	
	HRS/FBAA

- For use with Standard copper half round fascia brackets
- Use to adjust the angle of the fascia bracket when fascia is not straight

Finishes - *to specify a plain galvanised finish order the code as shown in the first column, to specify a premium colour or finish add the correct suffix to the end of the product code, for example HRS40/3MA/COP for a 115mm gutter 3m length in copper finish.

Copper Circular Downpipes

3m Length



	Product Code	Copper	
80mm	SRW1/3M*	/COP	
100mm	SRW2/3M*	/COP	

- Seamed with inside beading for clean aesthetic
- Integral socket at the top of the pipe to allow faster installation and secure connection between fittings
- 3m length as standard
- Roll formed from 0.6mm copper or zinc

Pipe Clip



	Product Code	Copper	
80mm	SRW1/PC*	/COP	
100mm	SRW2/PC*	/COP	

- Safe fastening of pipework to structure
- Stainless steel screws provided to easily tighten or loosen bracket
- Precision accuracy to ensure pipe is secured
- Recommended 2m maximum distance between pipe clips

Downpipe Connector



	Product Code	Copper	
80mm	SRW1/DC*	/COP	
100mm	SRW2/DC*	/COP	

- For use connecting off cuts of pipework together and the socket at the top of the pipe has been removed
- Fast and simple installation
- Consistant shape and accuracy of dimensions to allow internal conenction to pipework below and external connection via socket above

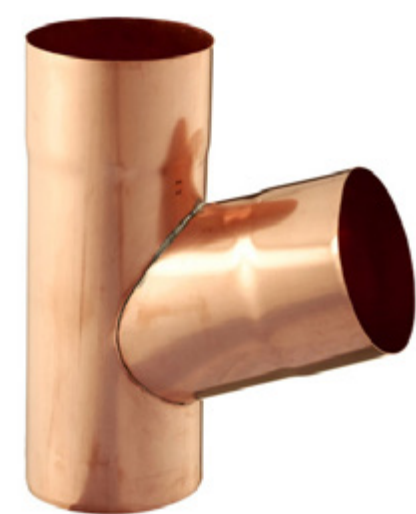
Reducer



	Product Code	Copper	
80mm	SRW1/RED*	/COP	

- For use when a transition from a larger pipe diameter to a smaller pipe diameter is required
- SRW2 pipe reducers are dual spigoted to fit either SRW1 or SRW0
- Roll formed from 0.6mm Copper or zinc

72° Branch



	Product Code	Copper	
80mm	SRW1/BR/72*	/COP	
100mm	SRW2/BR/72*	/COP	

- Manufactured from butt welded seamless pipework
- Used in conjunction with 70° bend to connect onto additional pipework to create a system
- Precision engineering to ensure secure fit

Finishes - *to specify a plain galvanised finish order the code as shown in the first column, to specify a premium colour or finish add the correct suffix to the end of the product code, for example SRW1/3MA/COP for a 115mm gutter 3m length in copper finish.

Copper Circular Downpipes

70° Bend



	Product Code	Copper	
80mm	SRW1/OSB/70*	/COP	
100mm	SRW2/OSB/70*	/COP	

- Manufactured from butt welded seamless pipework
- Used in conjunction with 72° branch to connect onto additional pipework to create a system
- Precision engineering to ensure secure fit

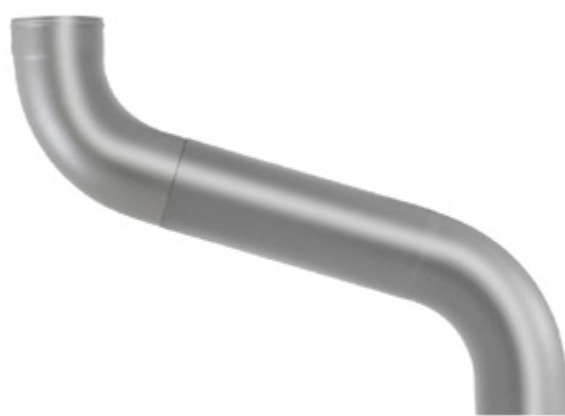
90° Bend



	Product Code	Copper	
80mm	SRW1/OSB/90*	/COP	
100mm	SRW2/OSB/90*	/COP	

- Manufactured from butt welded seamless pipework
- When two 90° bends are used together this can create an offset to position downpipes against structure
- Can incorporate a length of pipe between two bends to work with larger soffit depths
- Precision engineering to ensure secure fit

Adjustable Two Part Offset



	Product Code	Copper	Natural Zinc
80mm	SRW1/AOS/700*		/NTZ
100mm	SRW2/AOS/700*		/NTZ

- Complete offset for use when eaves protrude away from the structure where the downpipe will be fixed
- Reduces the number of connections and cuts in comparison to bends
- Offset dimension is between 200-700mm to allow adjustment on site to ensure a secure fitting everytime

Fixed 60mm Offset



	Product Code	Copper	
80mm	SRW1/FOS/60*	/COP	
100mm	SRW2/FOS/60*	/COP	

- Offset dimension fixed at 60mm
- Typically used at the base of a stack to line up with a gully or below ground drainage system
- Can also be used as a fixed offset at the top of the stack to achieve a 60mm offset if required

Shoe



	Product Code	Copper	
80mm	SRW1/SH*	/COP	
100mm	SRW2/SH*	/COP	

- Seamed with inside beading for clean aesthetic
- Integral socket at the top of the pipe to allow faster installation and secure connection between fittings
- Used at the base of a stack to discharge water horizontally toward a gully or below ground drainage

Finishes - *to specify a plain galvanised finish order the code as shown in the first column, to specify a premium colour or finish add the correct suffix to the end of the product code, for example SRW1/3MA/COP for a 115mm gutter 3m length in copper finish.

Copper Hoppers & Accessories

Contemporary Hopper



	Product Code	Copper	
80mm	SRW1/HH/GSR*	/COP	
100mm	SRW2/HH/GSR*	/COP	

- Used at the top of a stack to accept rainwater from a chute, rainwater outlet or downpipe
- Spigoted to allow connection into the standard socketed fittings
- Contemporary design with clean edges and box form
- Overall dimensions 385mm high x 220mm wide x 220mm deep

Parapet Hopper



	Product Code	Copper	Natural Zinc
80mm	SRW1/HH/PCH*		/NTZ
100mm	SRW2/HH/PCH*		/NTZ

Please Note: Parapet hoppers may be on an extended leadtime

- Used at the top of a stack to accept rainwater from a chute, rainwater outlet or downpipe
- Spigoted to allow connection into the standard socketed fittings
- Elongated rounded style to accept the discharge from a chute or rainwater outlet

Leaf Guard



	Product Code	Copper	
80mm	SRW1/LG*	/COP	
100mm	SRW2/LG*	/COP	

- Stops debris falling into the downpipe and creating a blockage in the following pipework system
- Generally used in areas where tree coverage is high
- Access pipes can be used as an alternative to clear blockages at ground level rather than having regular maintenance at eaves level

Access Pipe



	Product Code	Copper	
80mm	SRW1/AP*		
100mm	SRW2/AP*		

- Seamed with inside beading for clean aesthetic
- Integral socket at the top of the pipe to allow faster installation and secure connection between fittings
- Used near to ground level to gain access to the pipe in order to clear blockages in either direction

Finishes - *to specify a plain galvanised finish order the code as shown in the first column, to specify a premium colour or finish add the correct suffix to the end of the product code, for example SRW1/3MA/COP for a 115mm gutter 3m length in copper finish.