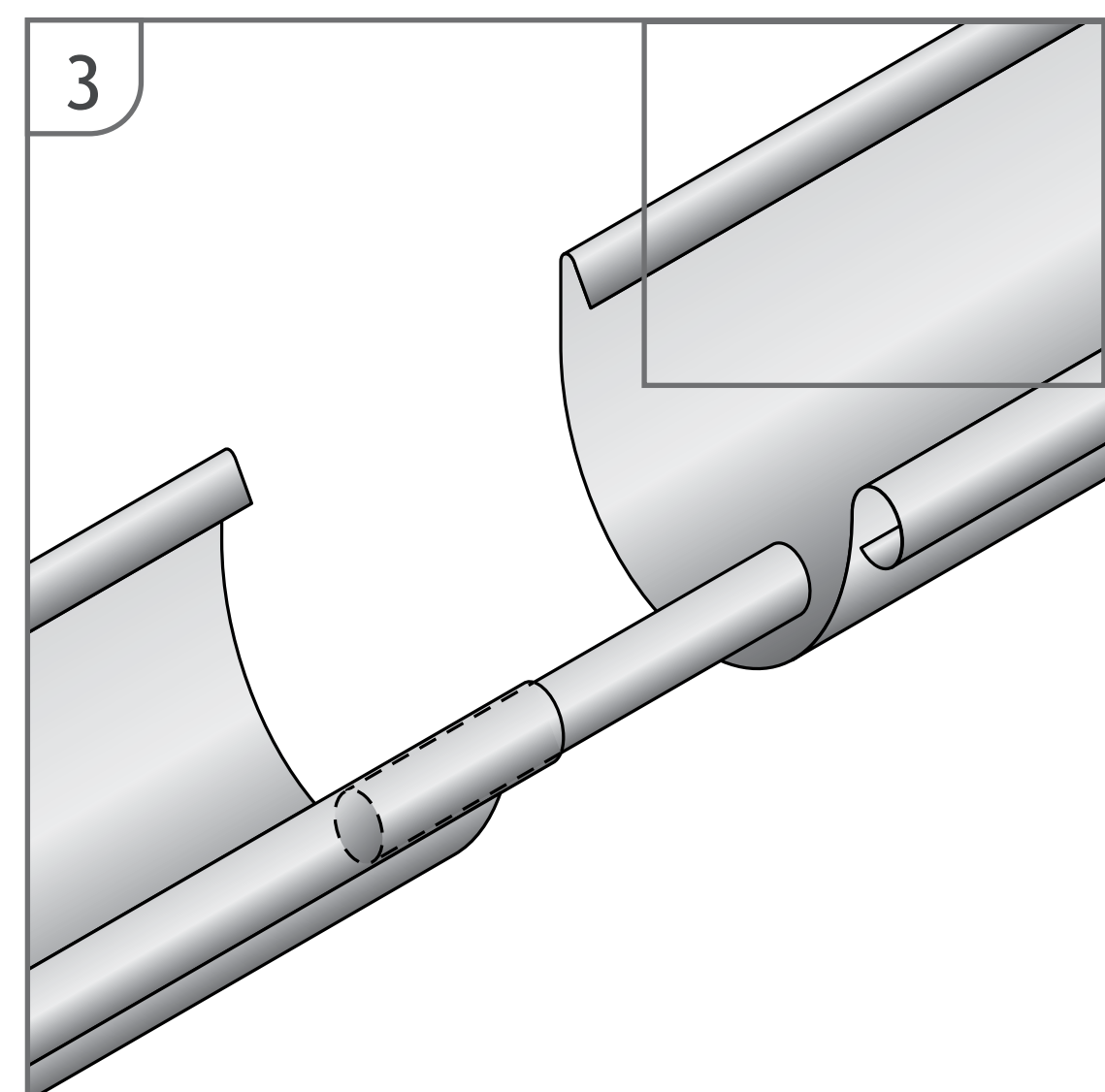
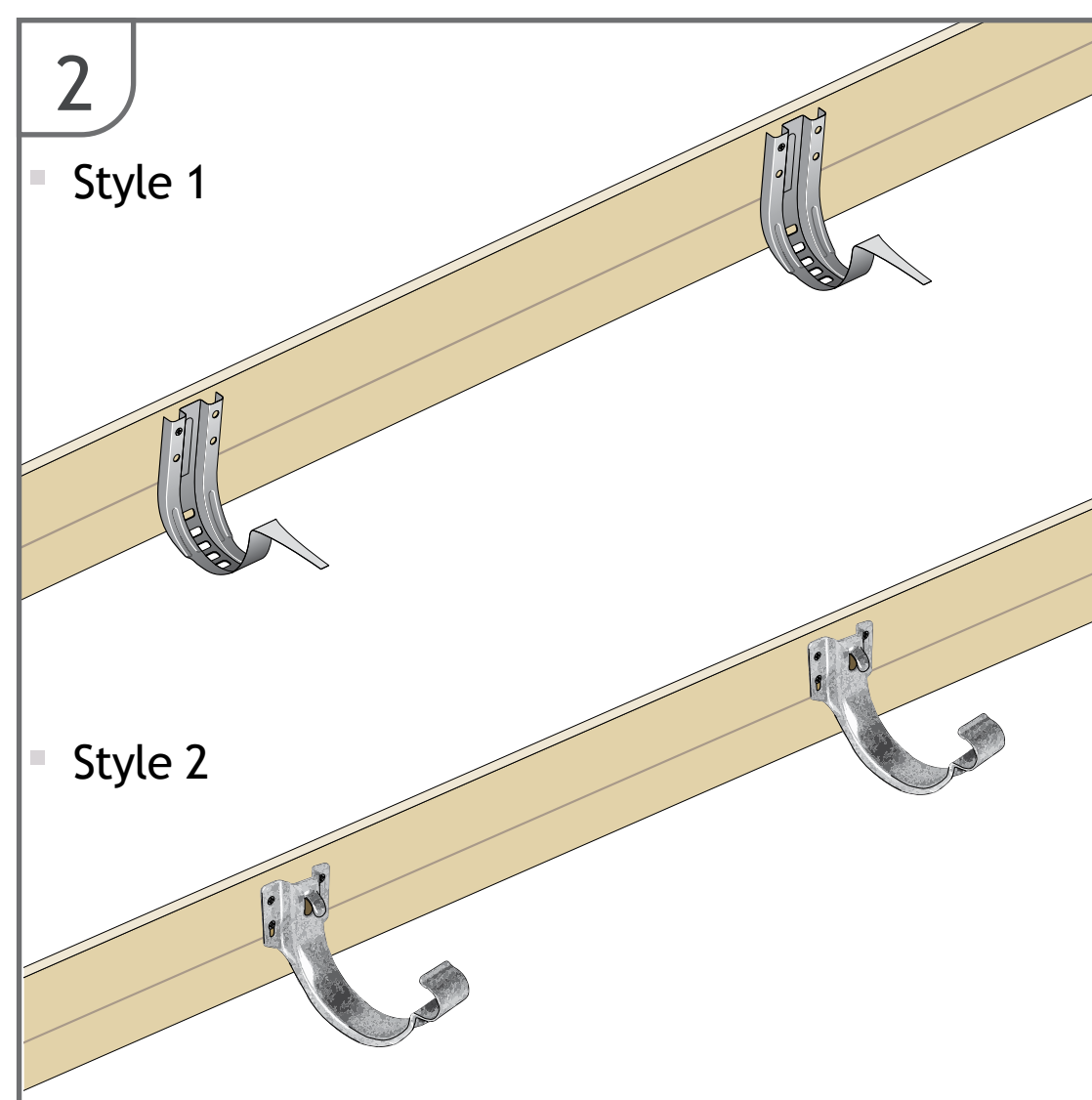
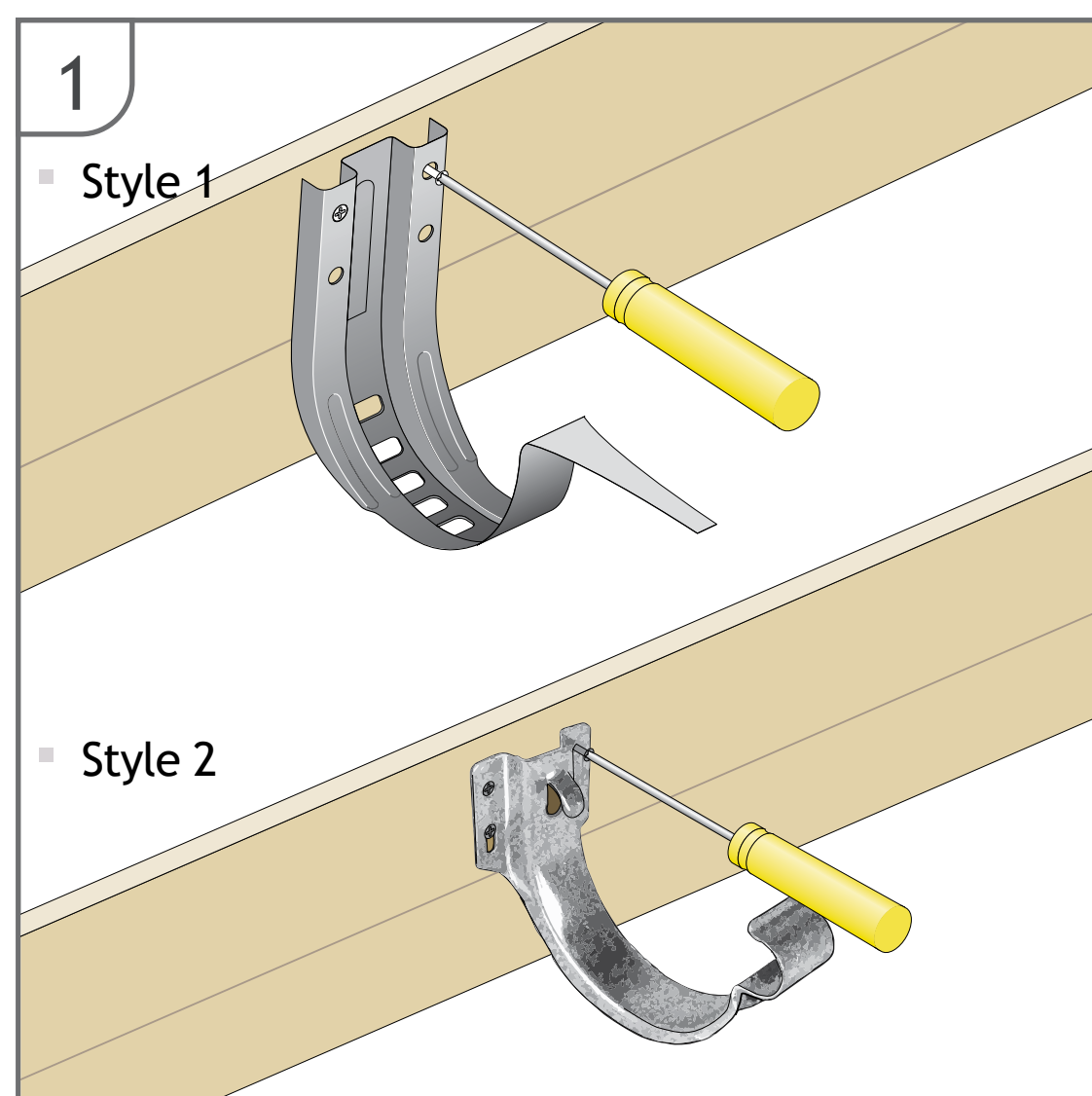


Half Round Installation Guide

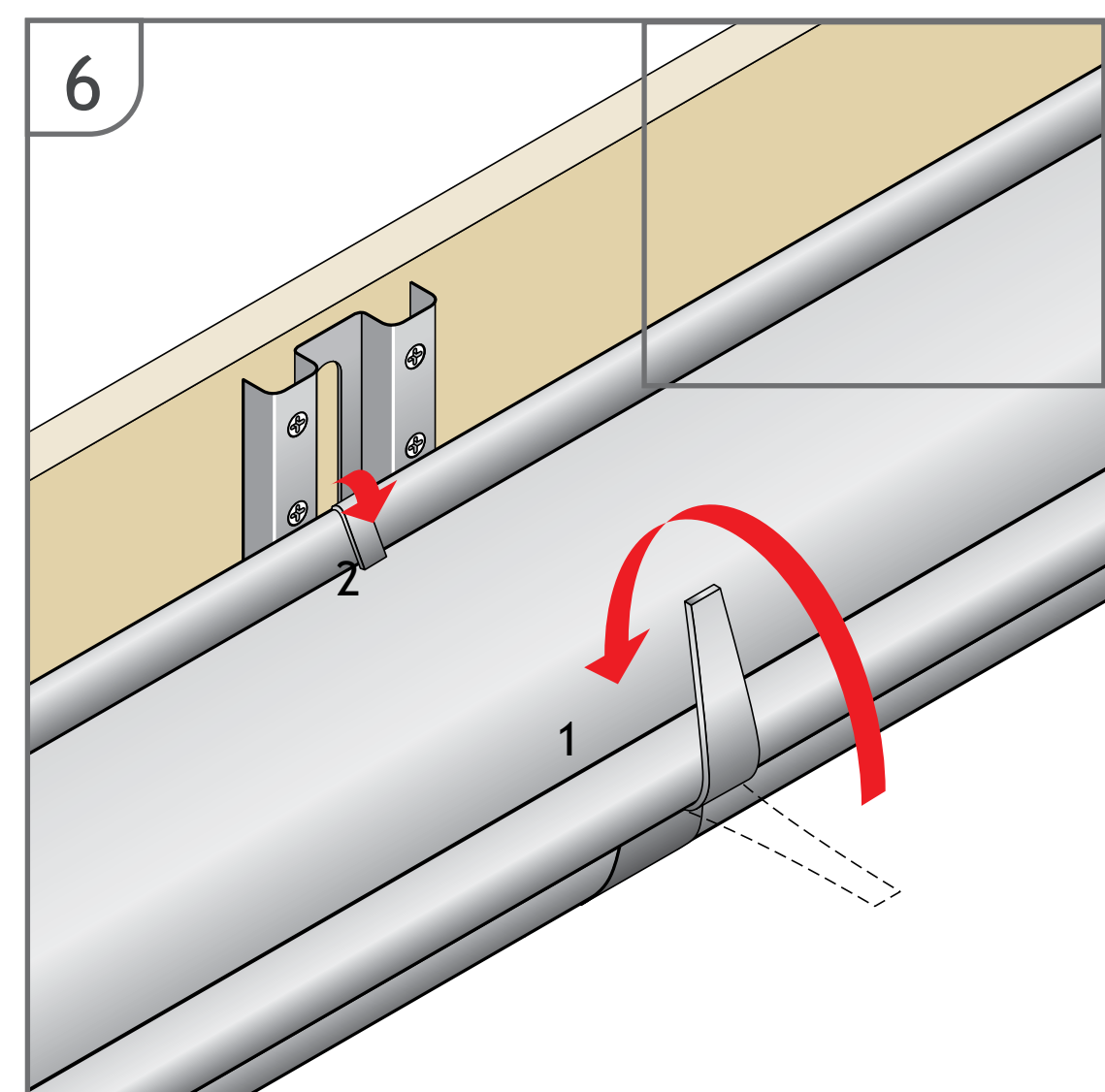
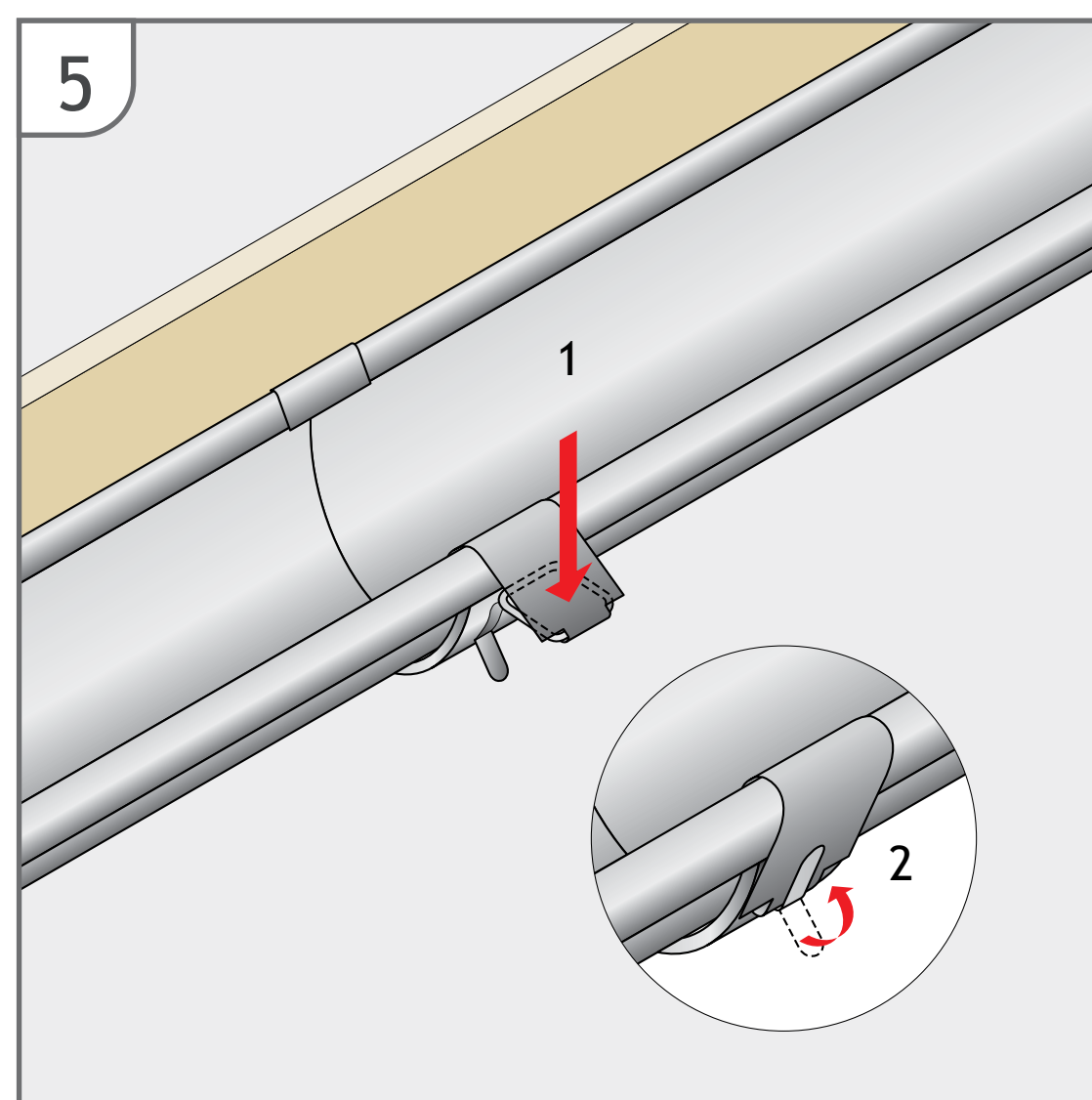
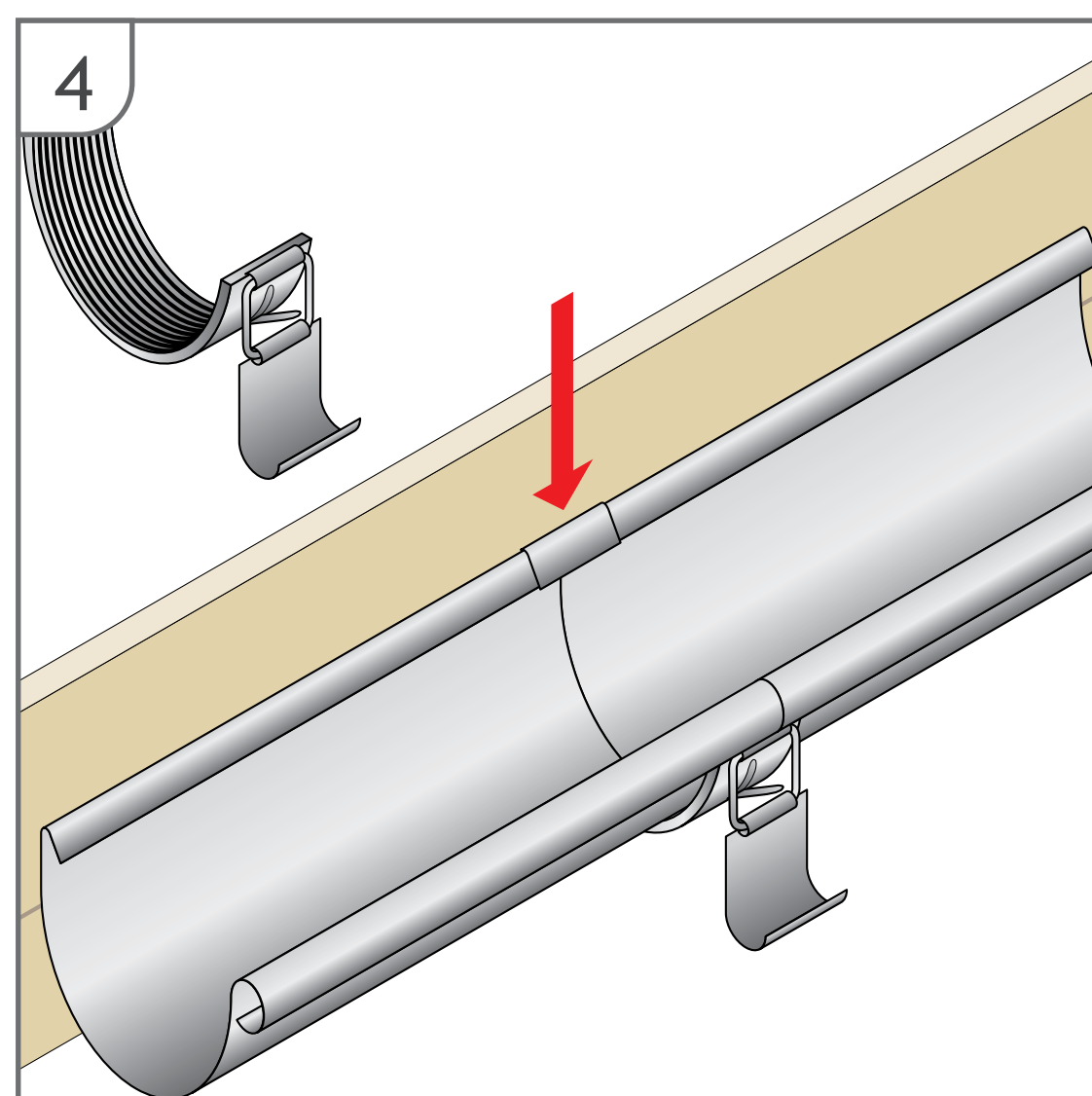
The gutter range can be connected to the pipework system and secured by standard pipe clips. The assembly and installation must be considered individually depending on the project, although general aspects of preparation are common to all as shown below.



- Generally position the fascia brackets at 915mm centres, using at least 3 brackets per gutter length. Use 2 screws on both the left and right fixing options and 1/no underneath the gutter securing tab.

- Use a string line to set out your fascia brackets along the gutter run allowing for a fall of 1:600 to 1:350 (max).

- A bead connector is used to join two lengths of gutter. Insert the connector into the front roll of each gutter length. Allow for a 4mm expansion gap.



- An EDPM rubber sealed union connector is used to connect the gutter lengths and angles together. Locate the union connector over the rear edge of the gutter.

- Locate the clasp over the front roll edge of the gutter. Push down on top of the clasp and squeeze the clasp shut. Fold the locking tab over to fully secure.

- Locate the gutter into the fascia bracket and seat level, then fold the front tab of the fascia bracket around the front roll and into the gutter. Fold the rear tab of the fascia bracket down and over the rear edge of the gutter.

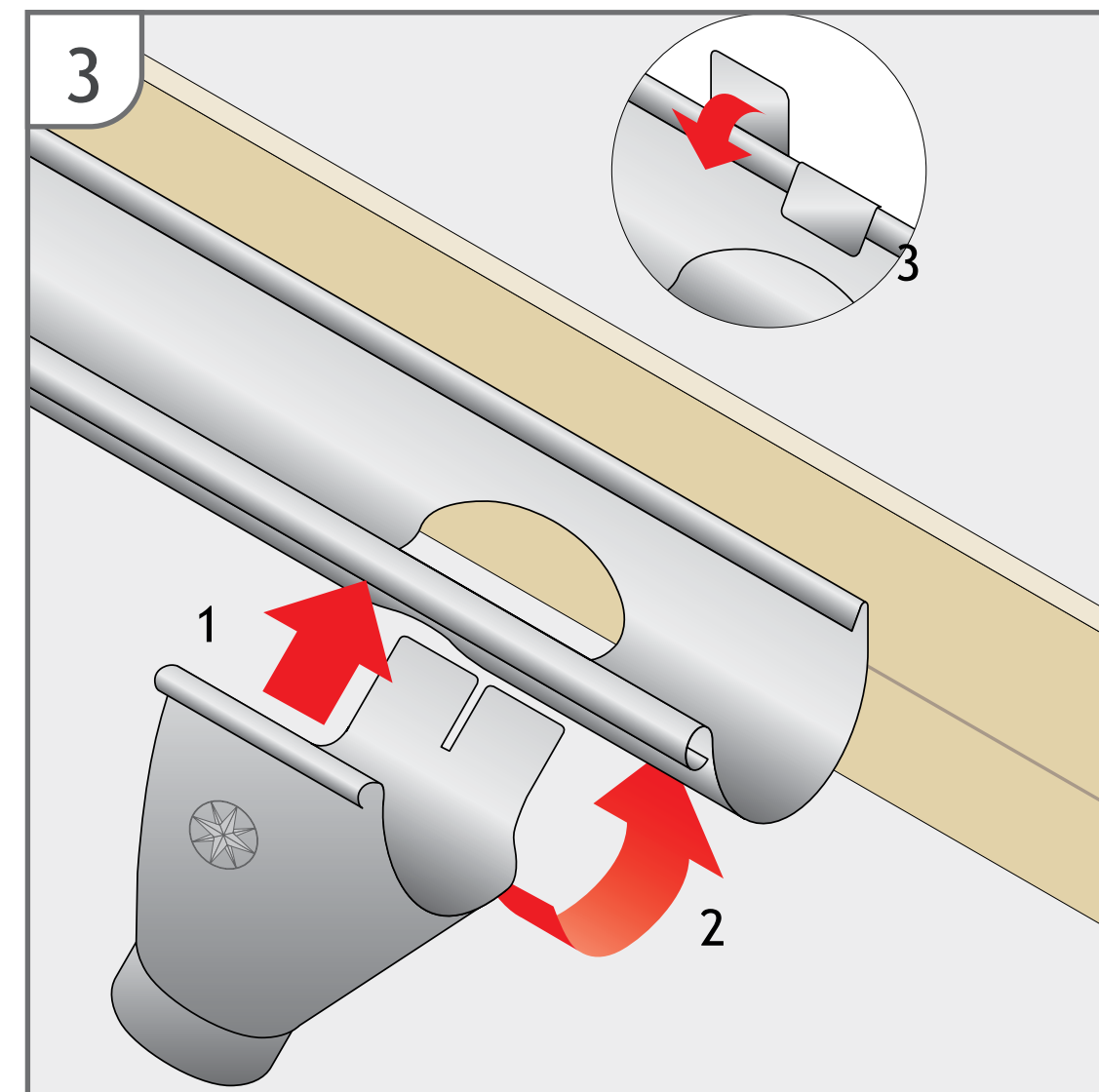
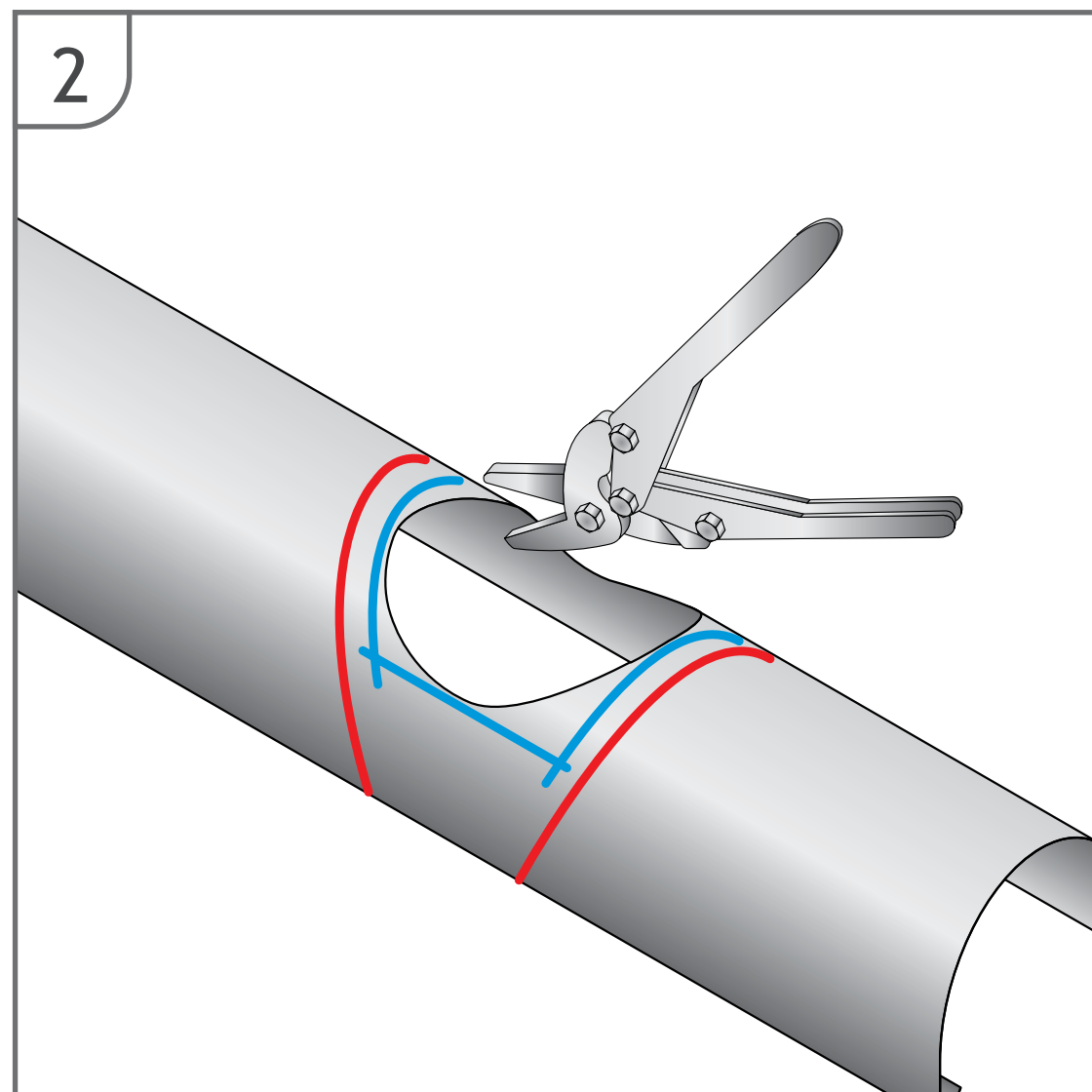
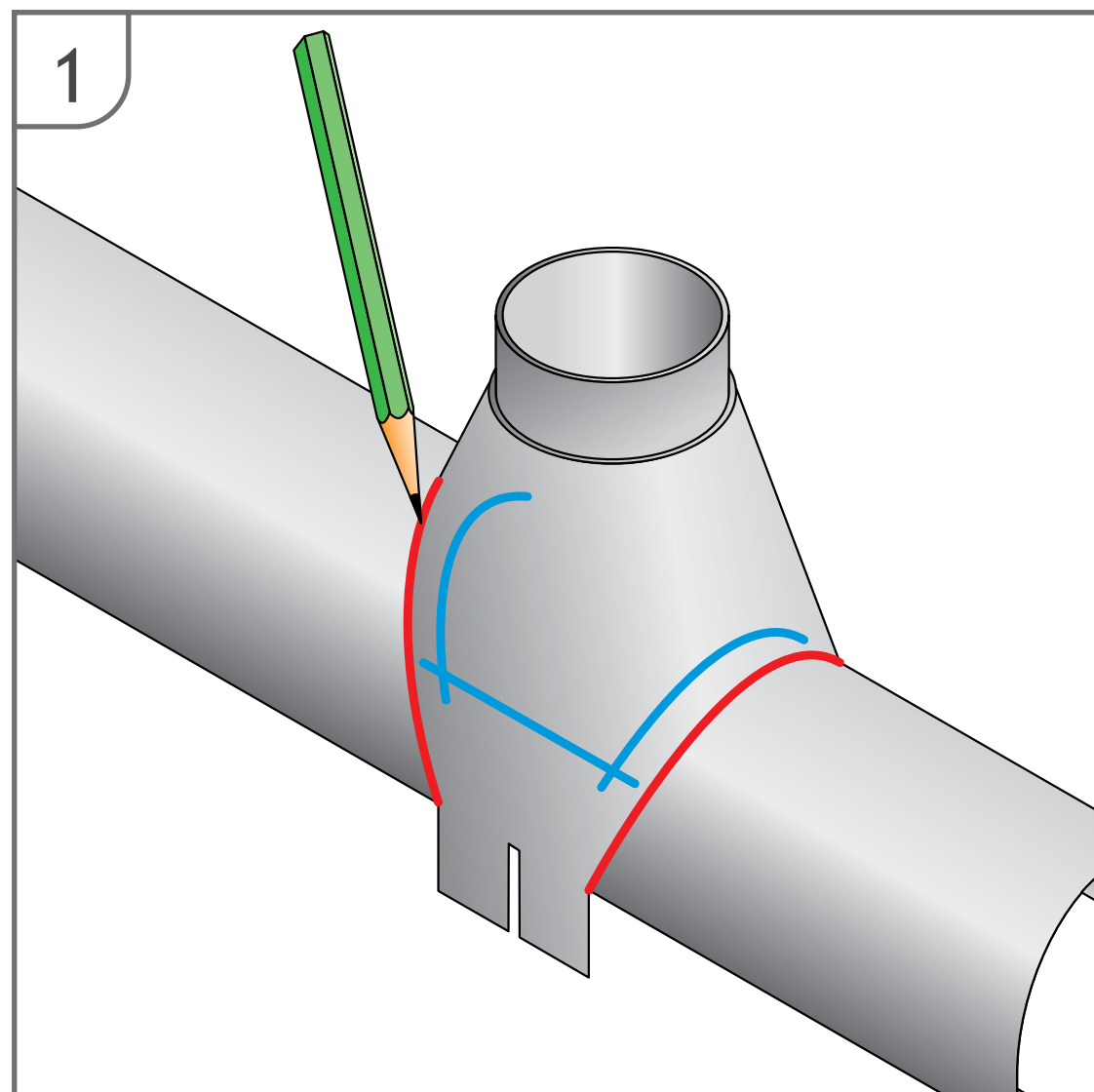
Important information

- The end/last fascia bracket on the gutter run should be placed 30 cm from the gutter end or corner. (Brackets at 915mm centres). Gutter angles are supported by two unions and don't require their own fascia bracket.
- Wear gloves when installing Plain Galv Steel: The Plain Galv will dull over time. Touching it without gloves breaks through the oily surface and starts the weathering process earlier in those areas. In a few months the 'weathering' will catch up all over.
- Try to keep pressing down on the entire surface of the rubber seal (as much as possible) throughout to encourage a good bond over the entire length of each seal.

For further information contact the Rainwater Technical Team on 0330 2231731

Circular Downpipe Installation Guide

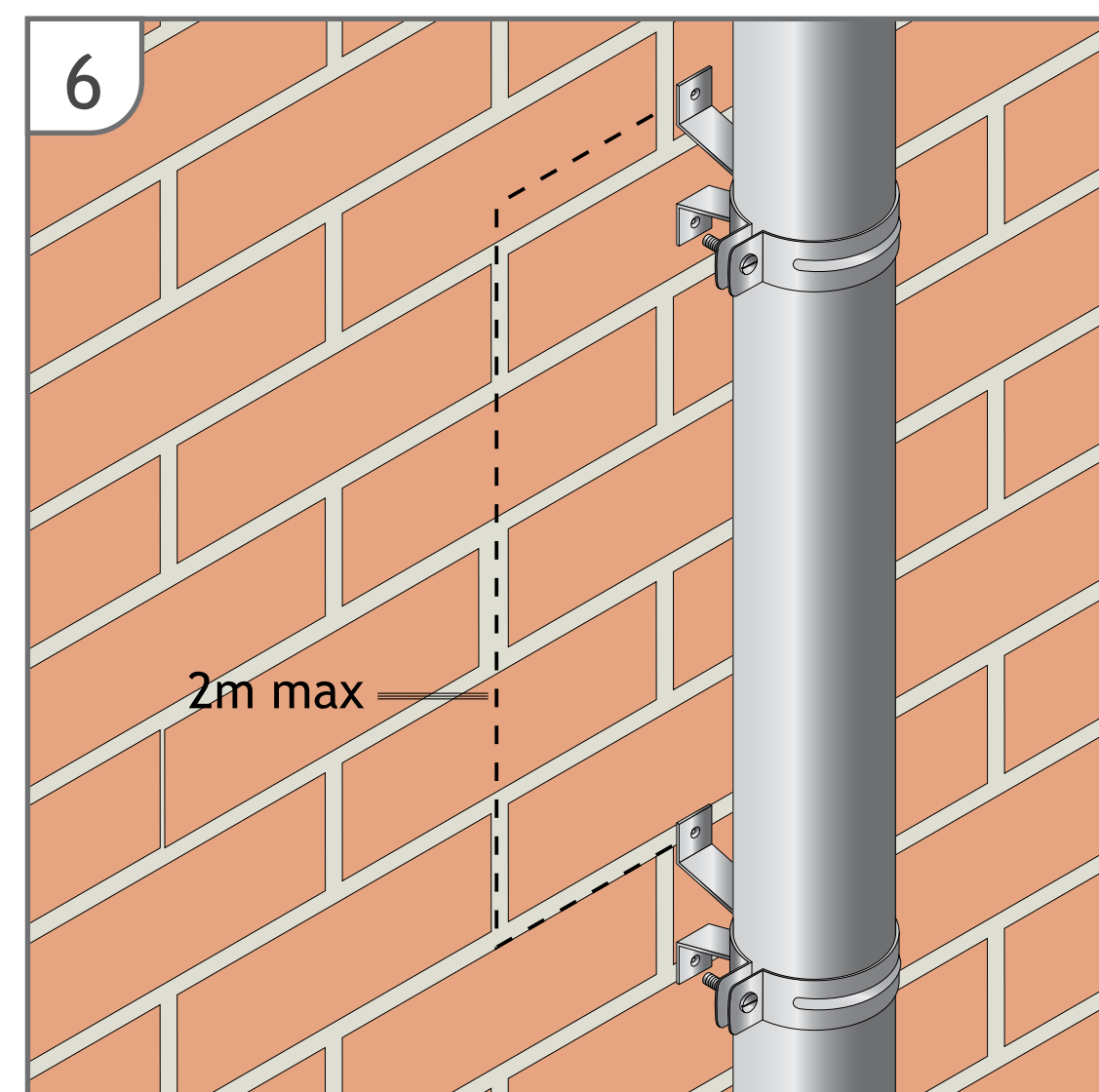
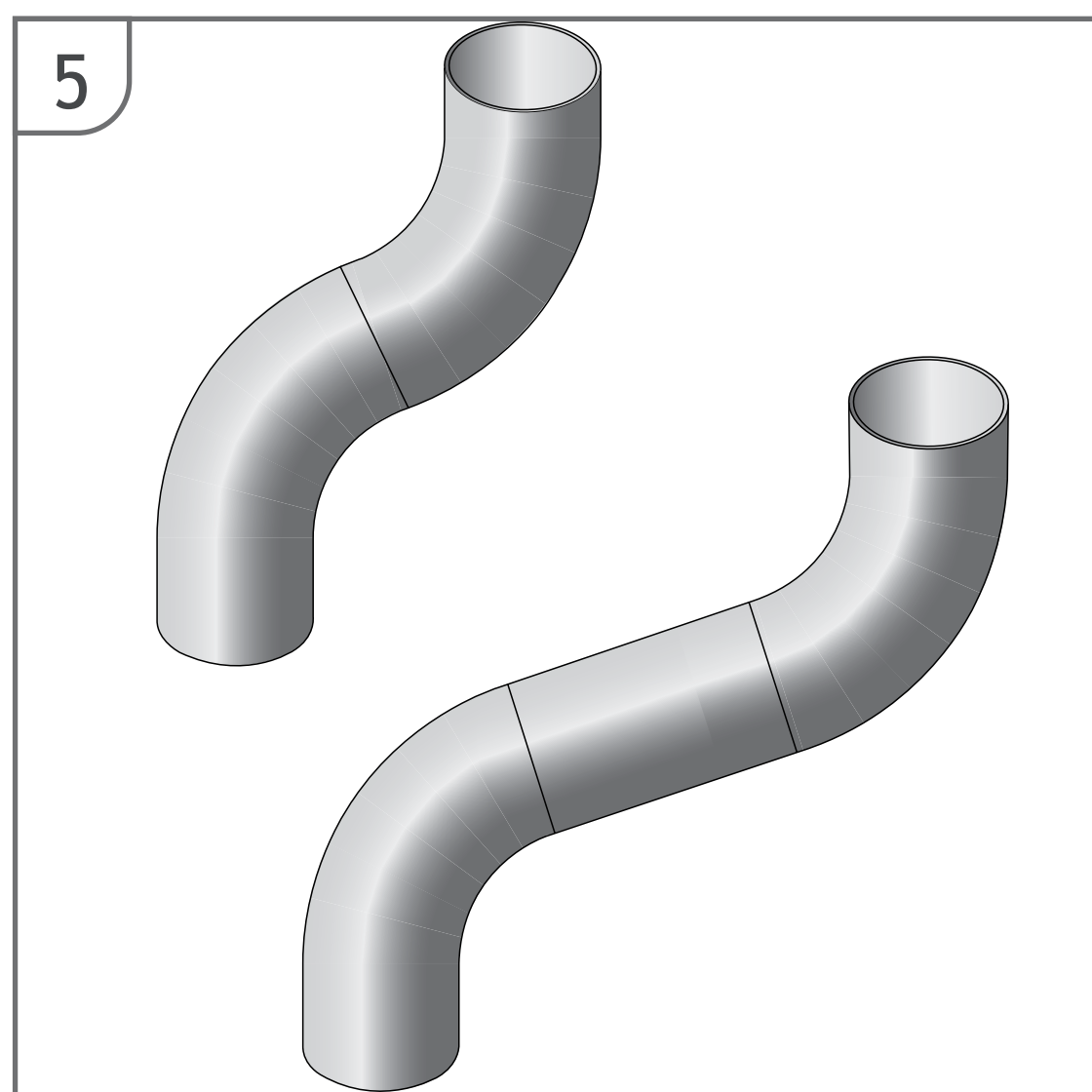
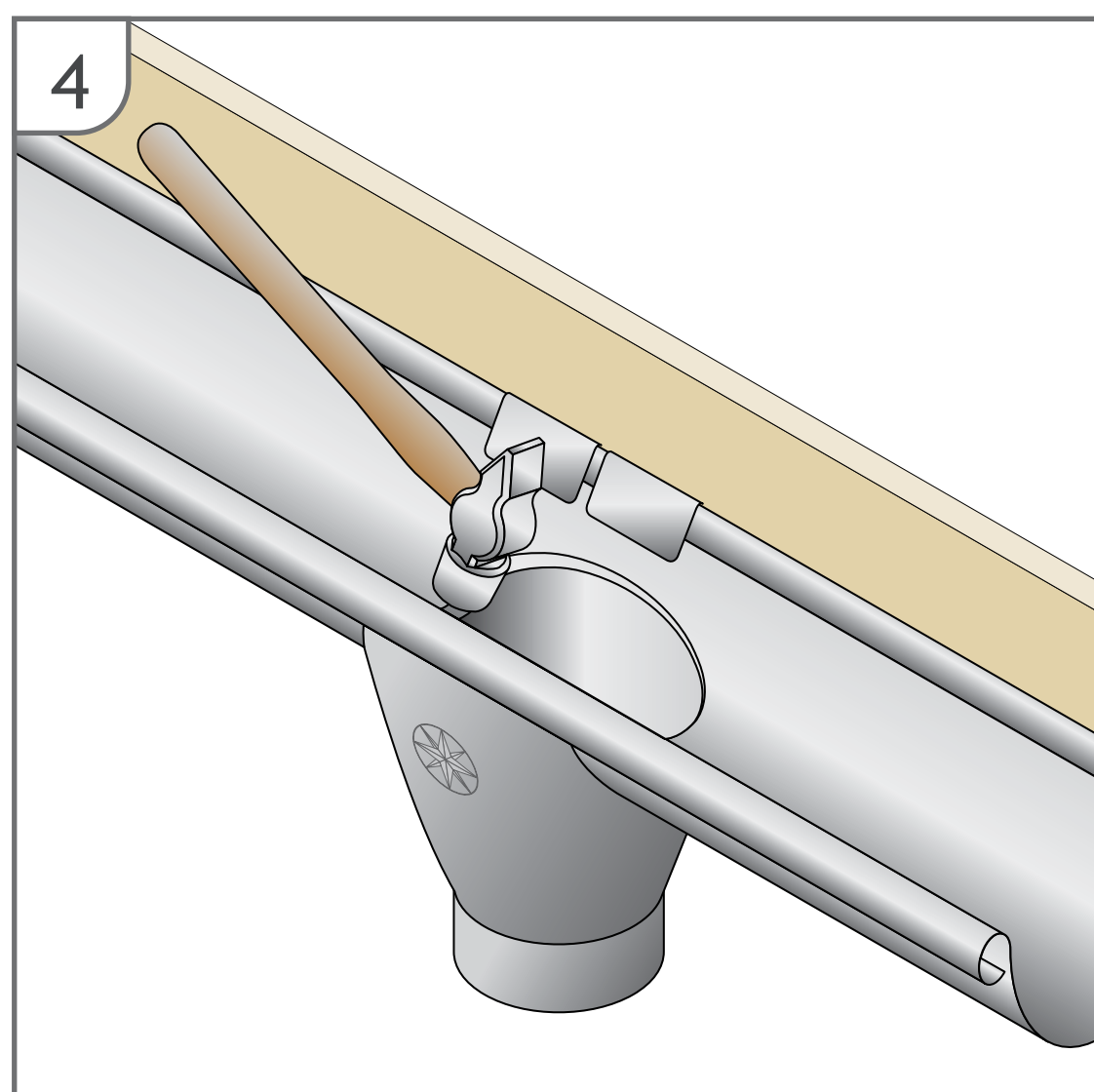
The downpipes and offsets are push-fit with 'swaged' ends, again for fast and watertight installation. The assembly and installation must be considered individually depending on the project, although general aspects of preparation are common to all as shown below.



- When installing a 'wrap around outlet' mark the desired location of the outlet by drawing a line either side of the outlet along its edge. Draw a further line 20mm inside of the outer lines and join these inner lines together in an oval pattern. This becomes the marking for the cut out hole.

- Use a hacksaw to make an initial hole in the gutter, and then use a set of tin snips to cut out the inner hole that you have marked out.

- Attach the outlet to the gutter and fold the rear tabs of the outlet over the rear edge of the gutter, making sure the outlet is aligned correctly to accept the downpipe.



- Tap the inner rough edges of the hole that was cut in the gutter, down into the outlet, to ensure a smooth flow of water.

- Offsets are achieved using 2/70° bends, with larger offsets being made by inserting a pipe length between the two bends.

- Downpipes should be installed using at least 2/no pipe clips per length. Mark out the clips locations and level with a spirit level or plumb line. Open the tightening screw to allow the pipe to be inserted, close the clip and re-tighten, making sure not to over tighten and damage the downpipe.

Important information

- The end/last fascia bracket on the gutter run should be placed 30 cm from the gutter end or corner. (Brackets at 915mm centres). Gutter angles are supported by two unions and don't require their own fascia bracket.
- Wear gloves when installing Plain Galv Steel: The Plain Galv will dull over time. Touching it without gloves breaks through the oily surface and starts the weathering process earlier in those areas. In a few months the 'weathering' will catch up all over.
- Try to keep pressing down on the entire surface of the rubber seal (as much as possible) throughout to encourage a good bond over the entire length of each seal.
- N.B. NEVER CUT WITH A SPINNING BLADE - zinc fumes released when galv steel is heated are toxic

For further information contact the Rainwater Technical Team on 01536 383 810