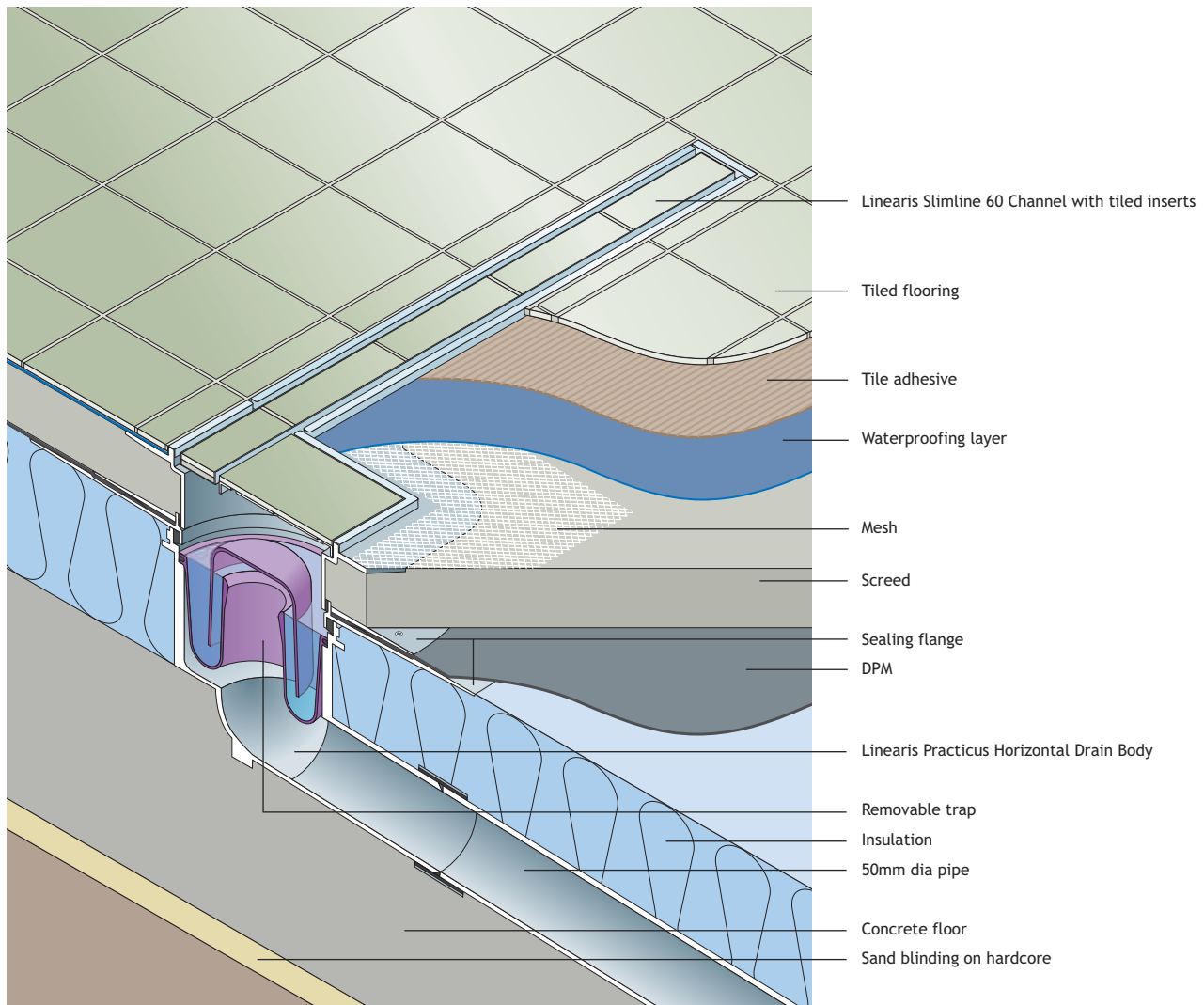


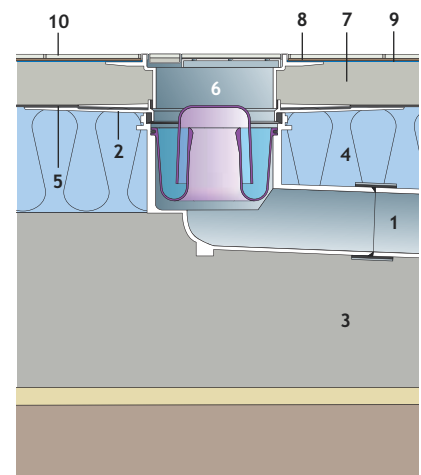
# Linearis Shower Floor Channels & Outlets - Application Details

## Slimline 60 Channel used with DPM Above Insulation



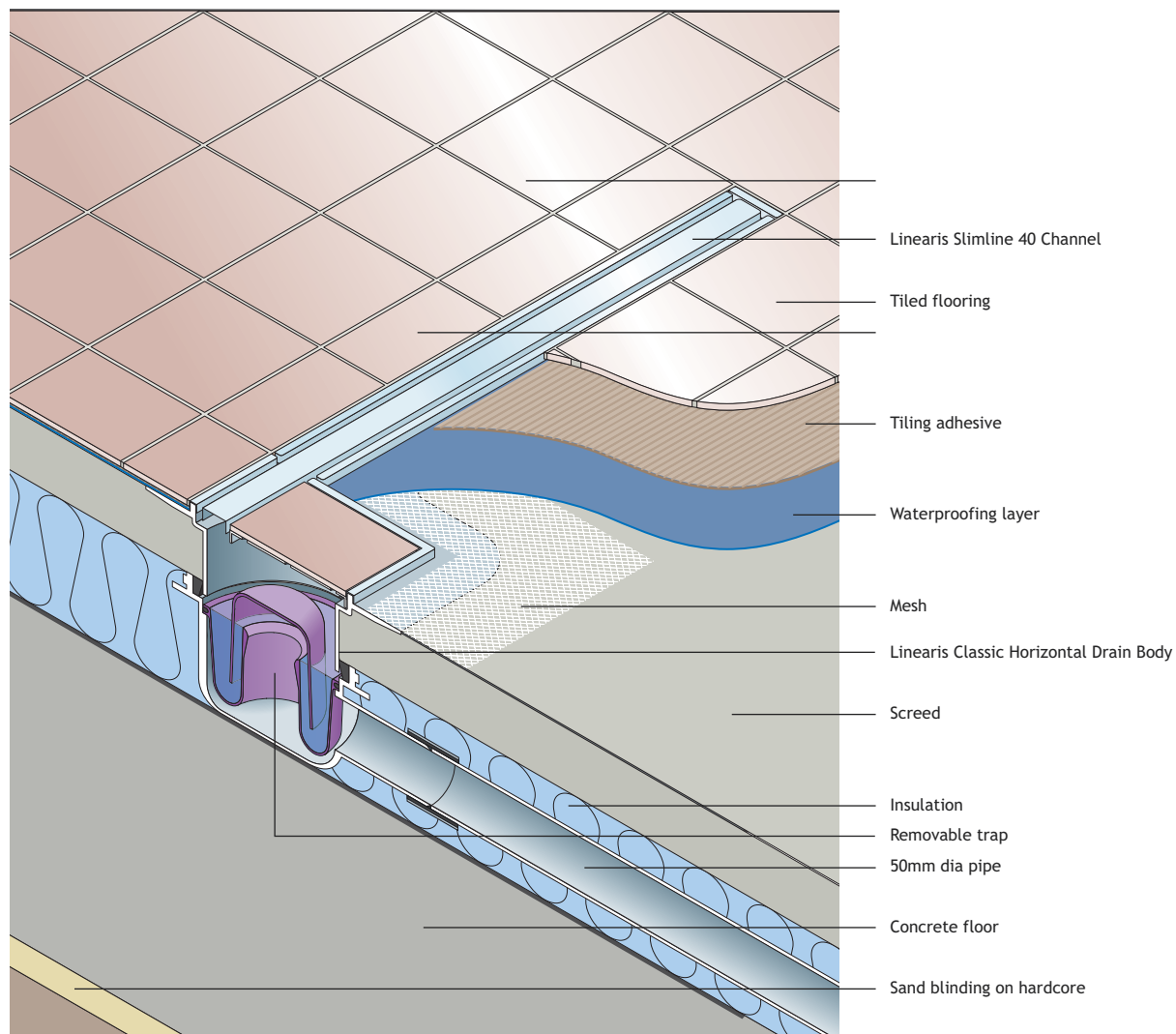
## Sitework

1. Connect waste pipe to drain body with proprietary coupling.
2. Set pipework so that the clamping flange of the lower section drain body will be level with the top insulation.
3. Lay concrete slab.
4. Lay insulation.
5. Lay DPM. Cut a hole in the membrane and clamp firmly to the floor drain incorporating optional sealing flange.
6. Push fit the sliding upper adjustable channel section into the drain body to the correct height for FFL.
7. Lay screed to falls.
8. Fit mesh sheet around perimeter of complete channel.
9. Apply waterproof tanking layer.
10. Apply adhesive and lay floor tiles.



# Linearis Shower Floor Channels & Outlets - Application Details

## Slimline 40 Channel used with DPM Below Insulation



## Sitework

1. Connect waste pipe to drain body with proprietary coupling.
2. Position drain body on concrete floor.
3. Lay insulation.
4. Push fit the sliding upper adjustable channel section into the drain body to the correct height for FFL.
5. Lay screed to falls.
6. Fit mesh sheet around perimeter of complete channel.
7. Apply waterproof tanking layer.
8. Apply adhesive and lay floor tiles.
9. Fit the channel grating.
10. Fit the access cover.

